

ActiveCaptain

**Karen & Jeffrey Siegel
Castine, Maine**

MTOA #3332

Why?

- Because we're cruisers too.
- Because information changes.
- Because boaters share their knowledge.
- Because opinions are important.
- Because sometimes the little marina is the perfect stop.
- Because anchorages are important too.

Who?

- Homeport: Castine, Maine on the Penobscot Bay
- Cruising experience: Maine to the Bahamas and the Keys three times. Cuba this time?
- Trawler: DeFever 53RPH
- Crew: 11 year old Dyna and her 2 year old grandson, Dylan



What?

- The Interactive Cruising Guidebook
- Community contributes knowledge, opinions, and experience.
- Markers on maps, satellite imagery and charts.
 - Marinas
 - Anchorages
 - Local Knowledge

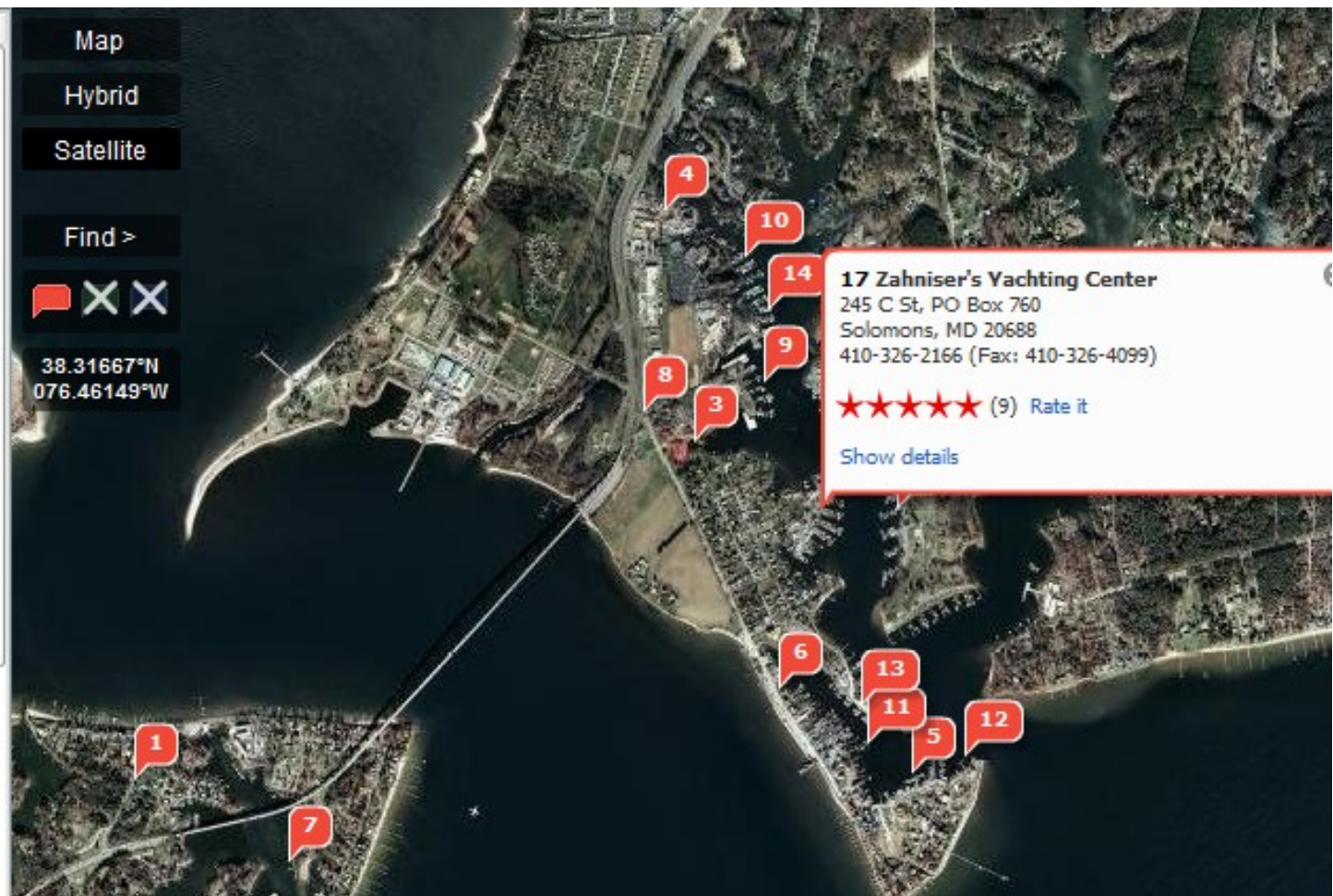
Red - Marinas

- 1. Boatel California**
★★★★★ Rate it Center / Details
- 2. Calvert Marina**
★★★★★ (6) Rate it Center / Details
- 3. Comfort Inn Beacon Marina**
★★★★★ Rate it Center / Details
- 4. Drum Point Marine**
★★★★★ Rate it Center / Details
- 5. Harbor Island Marina**
★★★★★ Rate it Center / Details
- 6. High Tide Marine**
★★★★★ (1) Rate it Center / Details
- 7. Lord Calvert Yacht Club**
★★★★★ Rate it Center / Details
- 8. Point Patience Marina**
★★★★★ Rate it Center / Details
- 9. Shepard's Yacht Yard**
★★★★★ Rate it Center / Details
- 10. Solomons Harbor Marina (formerly-Hospitality)**
★★★★★ (5) Rate it Center / Details
- 11. Solomons Island Yacht Club**



Red - Marinas

- 1. Boatel California**
★ ★ ★ ★ ★ Rate it Center / Details
- 2. Calvert Marina**
★ ★ ★ ★ ★ (6) Rate it Center / Details
- 3. Comfort Inn Beacon Marina**
★ ★ ★ ★ ★ Rate it Center / Details
- 4. Drum Point Marine**
★ ★ ★ ★ ★ Rate it Center / Details
- 5. Harbor Island Marina**
★ ★ ★ ★ ★ Rate it Center / Details
- 6. High Tide Marine**
★ ★ ★ ★ ★ (1) Rate it Center / Details
- 7. Lord Calvert Yacht Club**
★ ★ ★ ★ ★ Rate it Center / Details
- 8. Point Patience Marina**
★ ★ ★ ★ ★ Rate it Center / Details
- 9. Shepard's Yacht Yard**
★ ★ ★ ★ ★ Rate it Center / Details
- 10. Solomons Harbor Marina (formerly-Hospitality)**
★ ★ ★ ★ ★ (5) Rate it Center / Details
- 11. Solomons Island Yacht Club**



Red - Marinas

Zahniser's Yachting Center

General Navigation Dockage Fuel Services Reviews

Name, address, phone
Zahniser's Yachting Center
245 C St, PO Box 760
Solomons, MD 20688
United States (US)
410-326-2166 (Fax: 410-326-4099)
After hours: 410-326-2166

Facility type
Marina, Fuel, Repair

Payments accepted
Cash, Credit cards, Checks - Mastercard and Visa

VHF channel
9,16,69

Links
Web site: www.zahnisers.com
Email: terry@zahnisers.com; marina@zahnisers.com

People

Red – Marinas

Zahniser's Yachting Center

General Navigation Dockage Fuel Services **Reviews**

★★★★★ **Good mooring**, 2009-07-26
Captain: Captain Montana, Absarokee Montana (433)

At \$40.00, the moorings are a little expensive, but include swimming privileges and docking at the convenient dinghy dock. Long single pennant, as a power boat we had to bridle into the clevis to add a second line. Good swing room, not crammed together. No wakes.

★★★★★ **The Mayo Clinic for yachts**, 2009-07-23
Captain: japmcnamara, Tulsa (10)

After cruising for a year and a half, Lady needed some serious maintenance. Zahnisers had a specialist for each of her needs, main engine, generator, air conditioning, refrigeration, carpentry. Everybody was friendly, courteous and helpful. The pool was good. There's a restaurant and two bars at the marina, and town is an easy walk. We love this place and we'll be back.

★★★★★ **Good place to know**, 2009-05-19
Captain: Larry Freedman, Occoquan, VA (302)

This is a first rate marina that also happens to have an excellent service department if you need repairs.

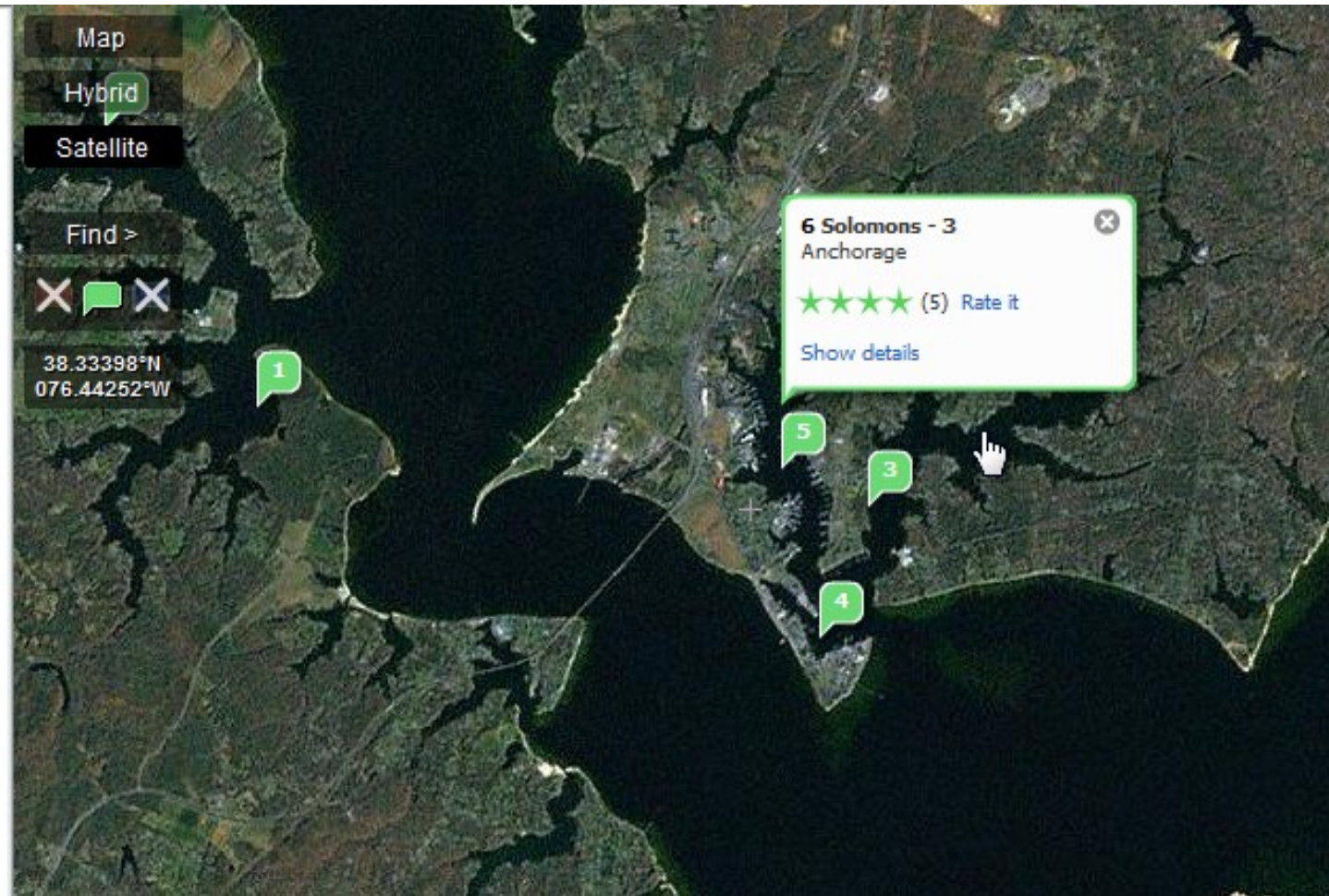
Green - Anchorages

1. Cuckhold Creek	★★★★★ (1) Rate it	Center / Details
2. Mill Creek	★★★★★ (1) Rate it	Center / Details
3. Mill Creek	★★★★★ (2) Rate it	Center / Details
4. Solomons - 1	★★★★★ (1) Rate it	Center / Details
5. Solomons - 2	★★★★★ (1) Rate it	Center / Details
6. Solomons - 3	★★★★★ (5) Rate it	Center / Details



Green - Anchorages

1. Cuckhold Creek	★★★★★ (1) Rate it	Center / Details
2. Mill Creek	★★★★★ (1) Rate it	Center / Details
3. Mill Creek	★★★★★ (2) Rate it	Center / Details
4. Solomons - 1	★★★★★ (1) Rate it	Center / Details
5. Solomons - 2	★★★★★ (1) Rate it	Center / Details
6. Solomons - 3	★★★★★ (5) Rate it	Center / Details



Green - Anchorages

Solomons - 3

Details **Reviews**

Name
Solomons - 3

Position
Latitude: 38.33556°N
Longitude: 076.45883°W

Description
Across from Spring Cove Marina, this anchorage provides easy access to Solomons Island (groceries, West Marine, PO, restaurants, laundry). There are other good anchorages all along this river. Dinghy dock at Hospitality Cove - Holiday Inn (\$2.00) gives easy access to all shopping including large Gourmet Grocery store, fish market, and bakery immediately in front of Holiday Inn. Other shopping, including West, Giant, etc. about one-half mile to right.

Approach
No approach information given

Typical tide: 1 feet

Internet access
WiFi comes and goes because many hotspots are becoming protected. ATT: 3G 900 kb; Verizon: 800 kb.

Green - Anchorages

Solomons - 3

Details Reviews

★★★★★ **Back Creek off Spring Cove and Hospitality Harbor Marinas, 2009-06-08**
Captain: Molly Blossom, Gloucester, Mass. (139)

Much better protection and holding than off Zahnhisser's Marina. In the right spot you can pick up excellent WiFi coverage from the afore said marinas. The bad news is that the Solomons Laundromat has died.

Individual ratings given:

- 5: Overall rating (excellent)
- 5: Current protection (excellent)
- 4: Holding (good)
- 5: Wind protection (excellent)
- 3: Wake protection (average)
- 4: Scenery quality (good)
- 5: Shopping facilities (excellent)

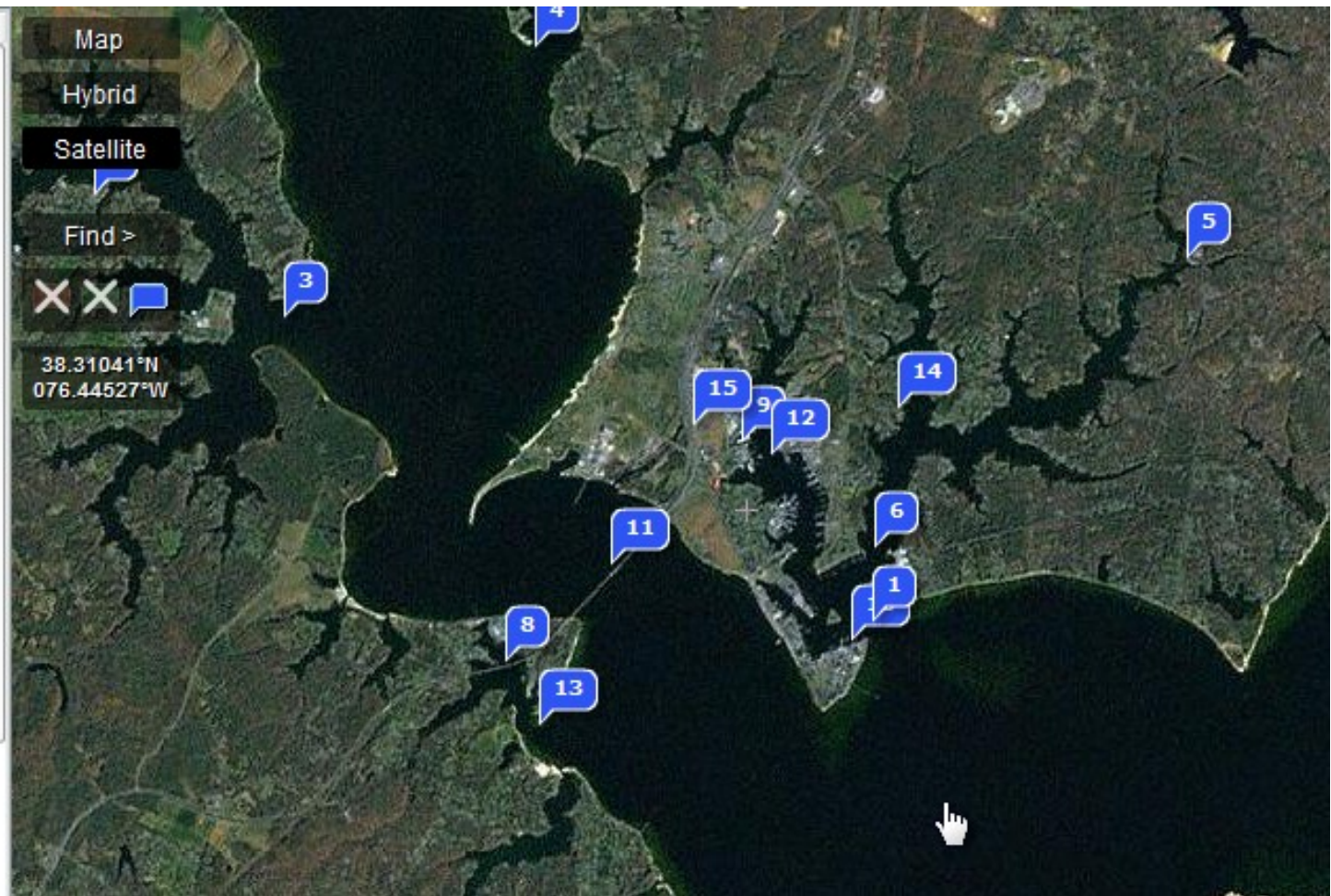
★★★★★ **Solomons Harbor, 2009-01-06**
Captain: Sea Jay, Solomons Island, Maryland (3)

Ultimate cruising destination in the Cheasapeake Bay and tributaries...It has it all.

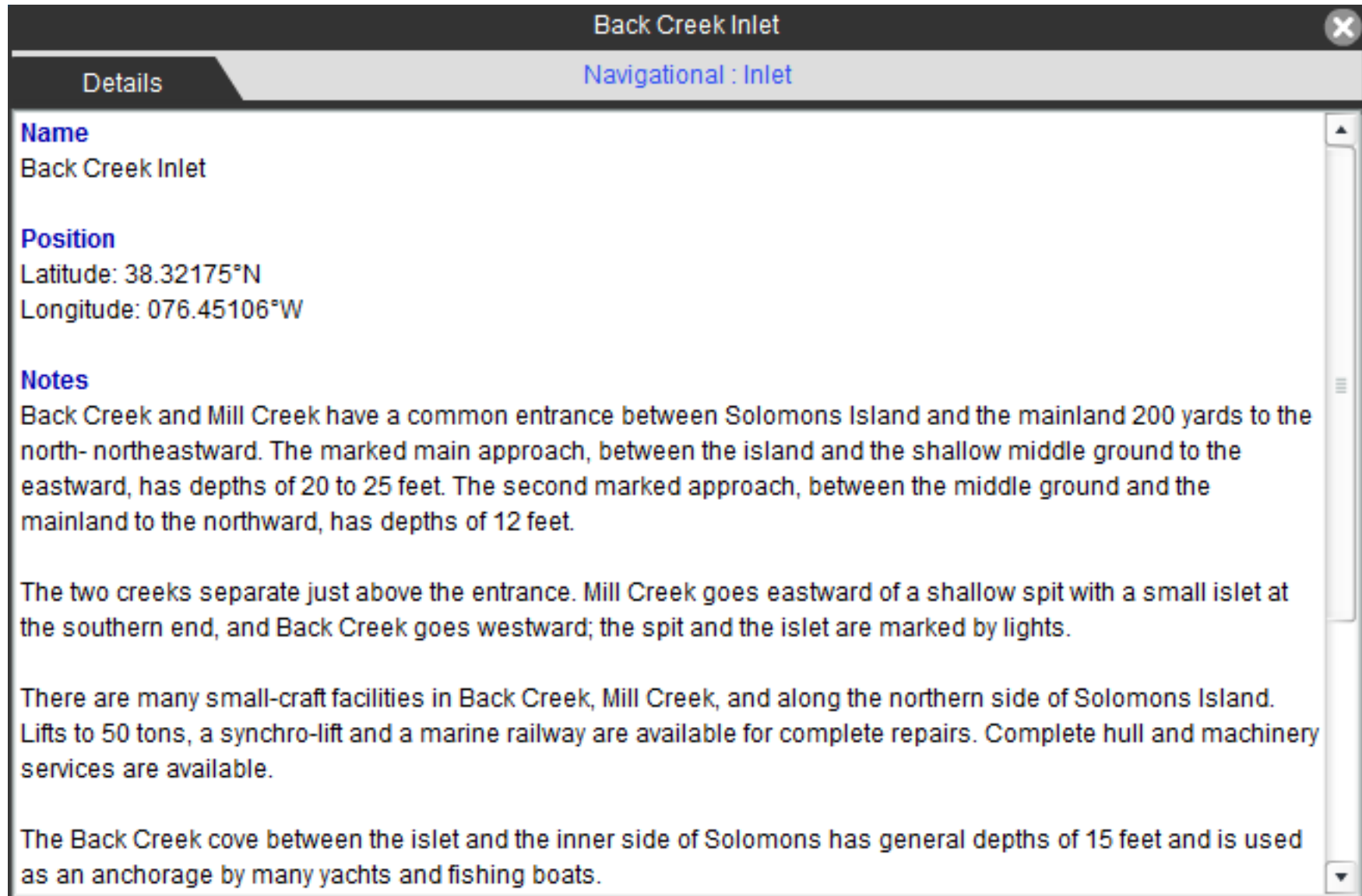
Individual ratings given:

Blue – Local Knowledge

1. Back Creek Inlet	Inlet	Center / Details
2. Blackstone Marina Boat Ramp	Boat ramp	Center / Details
3. Cuckhold Creek Inlet	Inlet	Center / Details
4. Hellen Creek Inlet	Inlet	Center / Details
5. K.B. Derr And Son Boat Ramp	Boat ramp	Center / Details
6. Mill Creek Inlet	Inlet	Center / Details
7. Patuxent River Inlet	Inlet	Center / Details
8. Route 4 Bridge	Bridge	Center / Details
9. Shepard's Yacht Yard Boat Ramp	Boat ramp	Center / Details
10. Solomons Point Marina Boat Ramp	Boat ramp	Center / Details
11. Thomas Johnson Memorial Bridge		



Blue – Local Knowledge



The screenshot shows a software window titled "Back Creek Inlet" with a close button in the top right corner. Below the title bar, there are two tabs: "Details" (selected) and "Navigational : Inlet". The "Details" tab contains the following information:

Name
Back Creek Inlet

Position
Latitude: 38.32175°N
Longitude: 076.45106°W

Notes
Back Creek and Mill Creek have a common entrance between Solomons Island and the mainland 200 yards to the north- northeastward. The marked main approach, between the island and the shallow middle ground to the eastward, has depths of 20 to 25 feet. The second marked approach, between the middle ground and the mainland to the northward, has depths of 12 feet.

The two creeks separate just above the entrance. Mill Creek goes eastward of a shallow spit with a small islet at the southern end, and Back Creek goes westward; the spit and the islet are marked by lights.

There are many small-craft facilities in Back Creek, Mill Creek, and along the northern side of Solomons Island. Lifts to 50 tons, a synchro-lift and a marine railway are available for complete repairs. Complete hull and machinery services are available.

The Back Creek cove between the islet and the inner side of Solomons has general depths of 15 feet and is used as an anchorage by many yachts and fishing boats.

“Points”

- Given to Captains for contributions to the site.
- Shows experience and level of participation.
- Manufacturers offer product samples based on point levels.
- The ActiveCaptain hat.
- The ActiveCaptain store.



The Future

- ActiveCaptain “X”
- Offline access
- Advanced searching
- Additional platforms
- More third party involvement

“X”

Welcome

Markers

Location Search

Markers

Markers in View Sorted by Name

- 1. Calvert Marina**
★★★★★ (6) Rate it Center / Details
Diesel: 2.36 USD per gal on 2009-09-12
- 2. Solomons Yachting Center**
★★★★★ (4) Rate it Center / Details
Diesel: 2.36 USD per gal on 2009-09-12
- 3. Spring Cove Marina**
★★★★★ (8) Rate it Center / Details
Diesel: 2.40 USD per gal on 2009-09-10
- 4. Harbor Island Marina**
★★★★★ (0) Rate it Center / Details
Diesel: 2.60 USD per gal on 2009-08-15
- 5. Comfort Inn Beacon Marina**
★★★★★ (0) Rate it Center / Details
Diesel: none
- 6. Drum Point Marine**
★★★★★ (0) Rate it Center / Details
Diesel: none
- 7. High Tide Marine**
★★★★★ (1) Rate it Center / Details

Find Marina

Settings

NOAA Charts Map Hybrid Satellite

800.yards

Microsoft Virtual Earth™

“X”

Welcome

Markers

Location Search

Markers

Markers in View Sorted by Name

- Joyner Marina**
★ ★ ★ ★ ★ (2) Rate it Center / Details
Diesel: 2.75 USD per gal on 2009-09-08
- Carolina Inlet Marina**
★ ★ ★ ★ ★ (0) Rate it Center / Details
Diesel: none
- Carolina Marina and Yacht Club**
★ ★ ★ ★ ★ (0) Rate it Center / Details
Diesel: available - price unknown
- Inlet Watch Yacht Club**
★ ★ ★ ★ ★ (0) Rate it Center / Details
Diesel: none
- Carolina Beach Inlet**
Inlet Center / Details
- Shoaling**
Hazard Center / Details

Find Marina

Settings

NOAA Charts Map Hybrid Satellite

The nautical chart shows the Carolina Beach Inlet area. It includes features like Pickett Rock, Dick Bay, and Carolina Beach Inlet. A red dashed line indicates a COLREGS DEMARCATION LINE. Various navigational aids and depth soundings are shown. Six numbered markers (1-6) are placed on the chart, corresponding to the list on the left. Marker 1 is at the bottom left, marker 2 is near the top left, marker 3 is near the center, marker 4 is near the top center, marker 5 is near the right side, and marker 6 is near the top right. A scale bar at the bottom right indicates 800 yards.

Microsoft® Virtual Earth™